

All Ceramic Partial Veneer Preparations

Dr Modar Ahmad
D.D.S, M.Sc, Ph.D.,
Prosthodontist
Dental Implantologist
Cosmetic Dentist

Ceramic Onlays

- Require bulk for strength
- Greater extension on proximals for finishing
- Rounded internal angles
- Greater angulation (divergence) of internal walls
- Bonded to tooth

Inlays & Onlays

Gold

vs.

Ceramic

- 1-2 mm occ. clearance
- Sharp internal angles
- Beveled shoulders in box & on functional cusps
- 6-10 degree occlusal divergence in isthmus & boxes
- Minimal proximal extension
- Luted to tooth

- 2 mm occ. clearance
- Rounded internal angles
- 90 degree finish lines in box and on all cusps
- 12-15 degree occlusal divergence in isthmus & boxes
- Greater proximal extension
- Bonded to tooth

Inlays



Gold



Ceramic

Onlays



Gold



Ceramic

Onlays



Gold



Ceramic

Onlays



Gold



Ceramic

Onlays



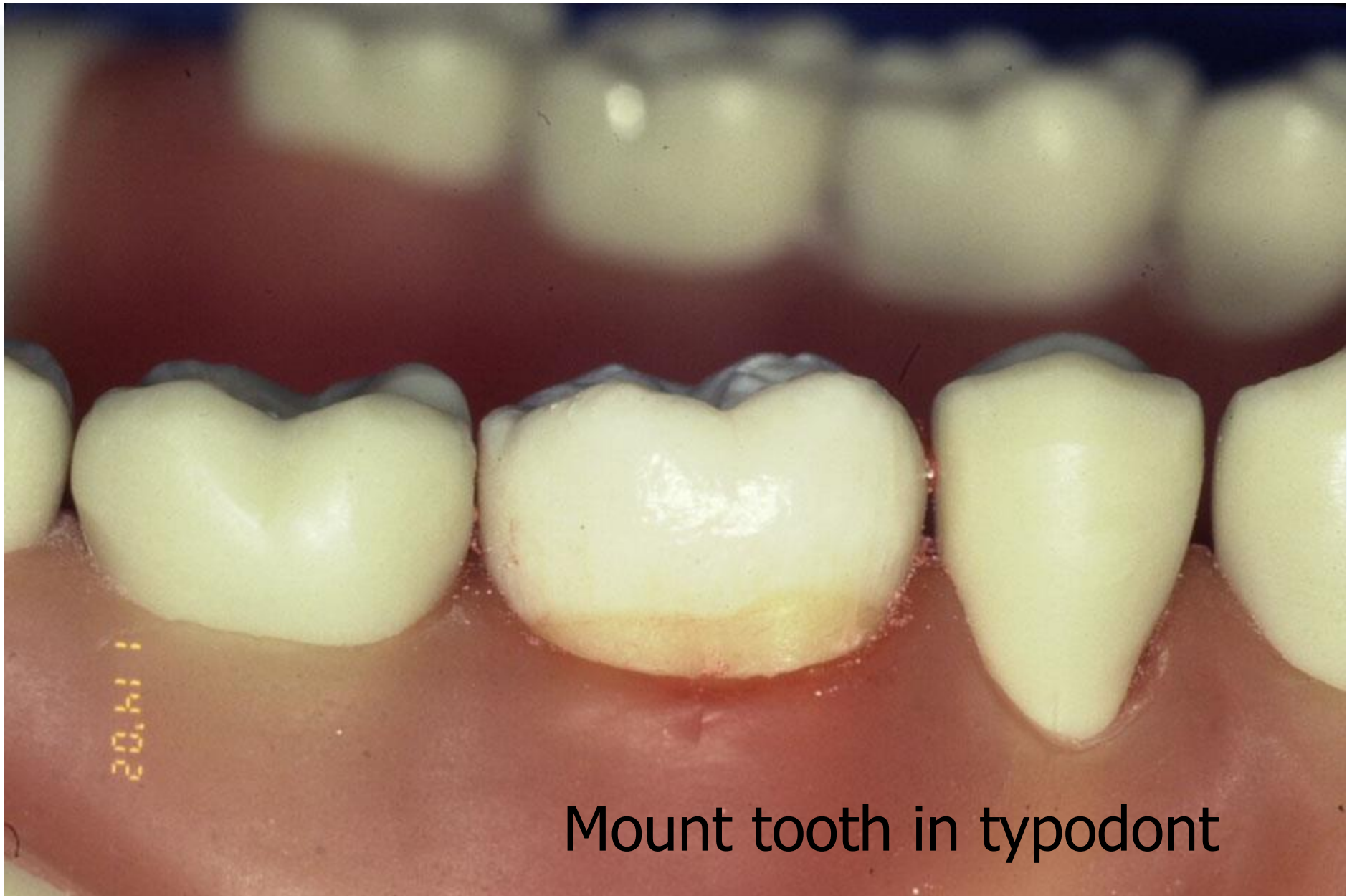
Gold



Ceramic

Preparation Steps

- Place rubber dam
- Remove old restoration
- Evaluate tooth for appropriate restoration-block out minor undercuts
- Prepare occlusal portion
- Prepare proximal box(es)
- Occlusal clearance
- Finish margins

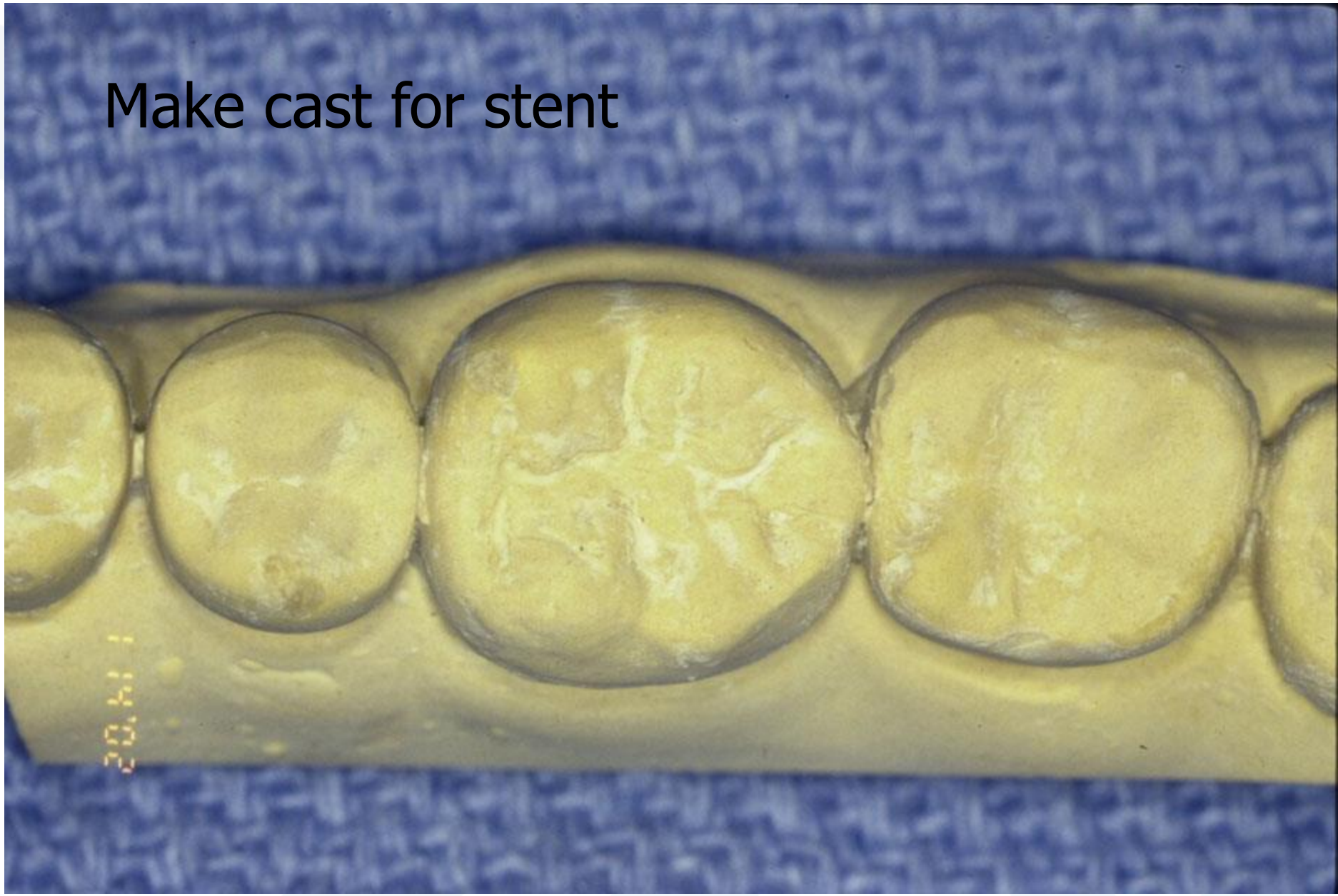


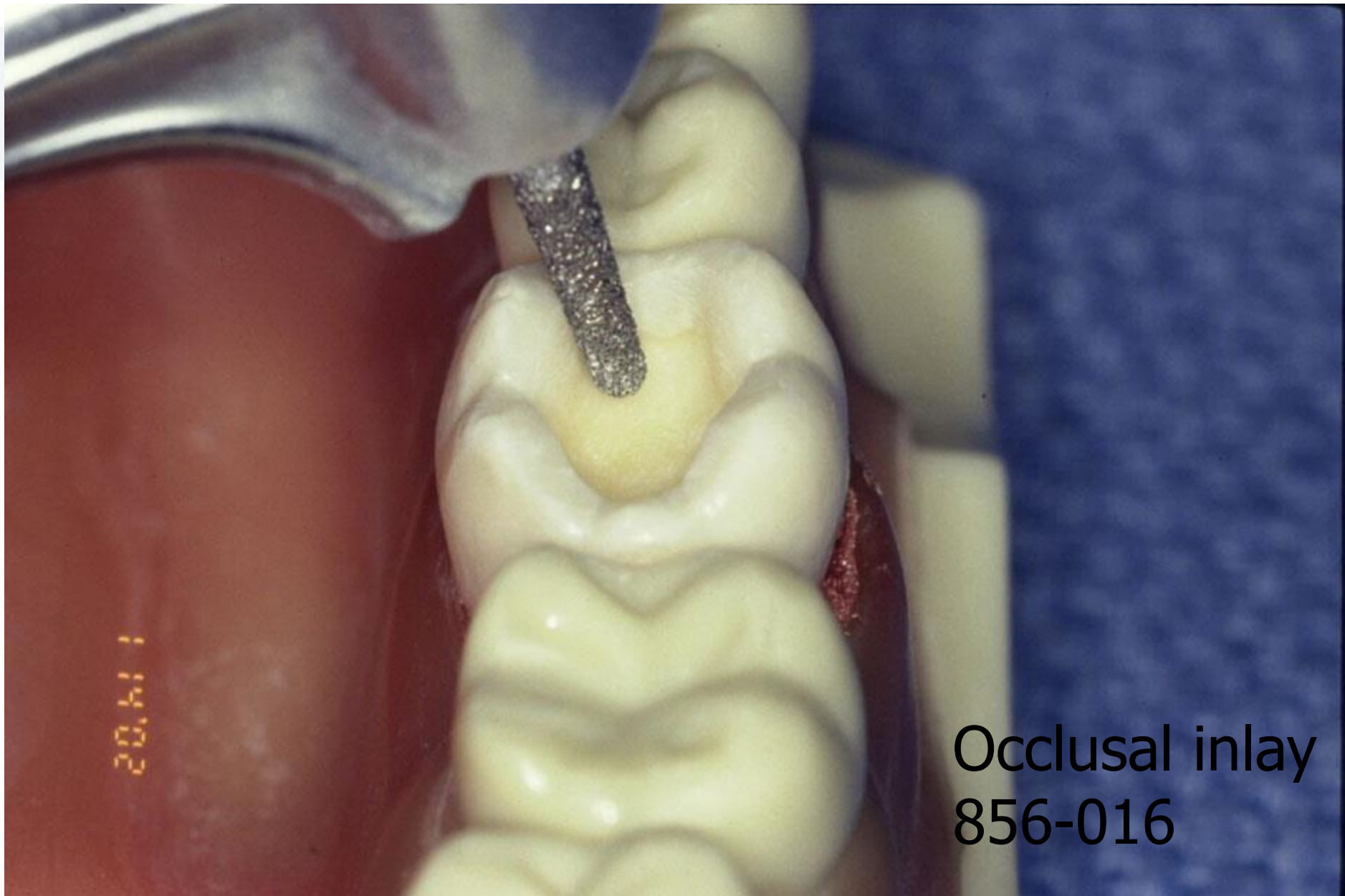
Mount tooth in typodont





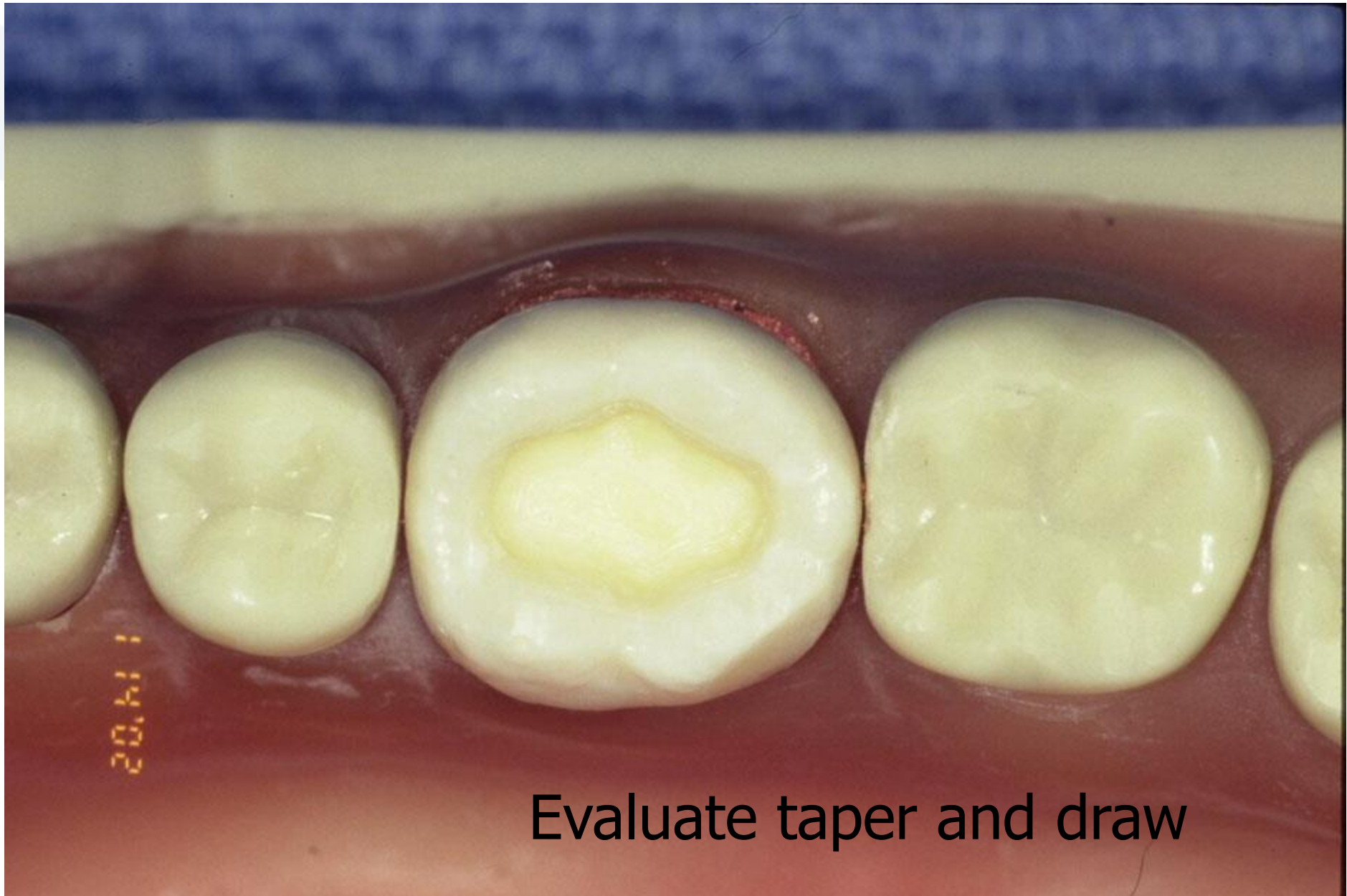
Make cast for stent







Rotate and tip bur for adequate divergence

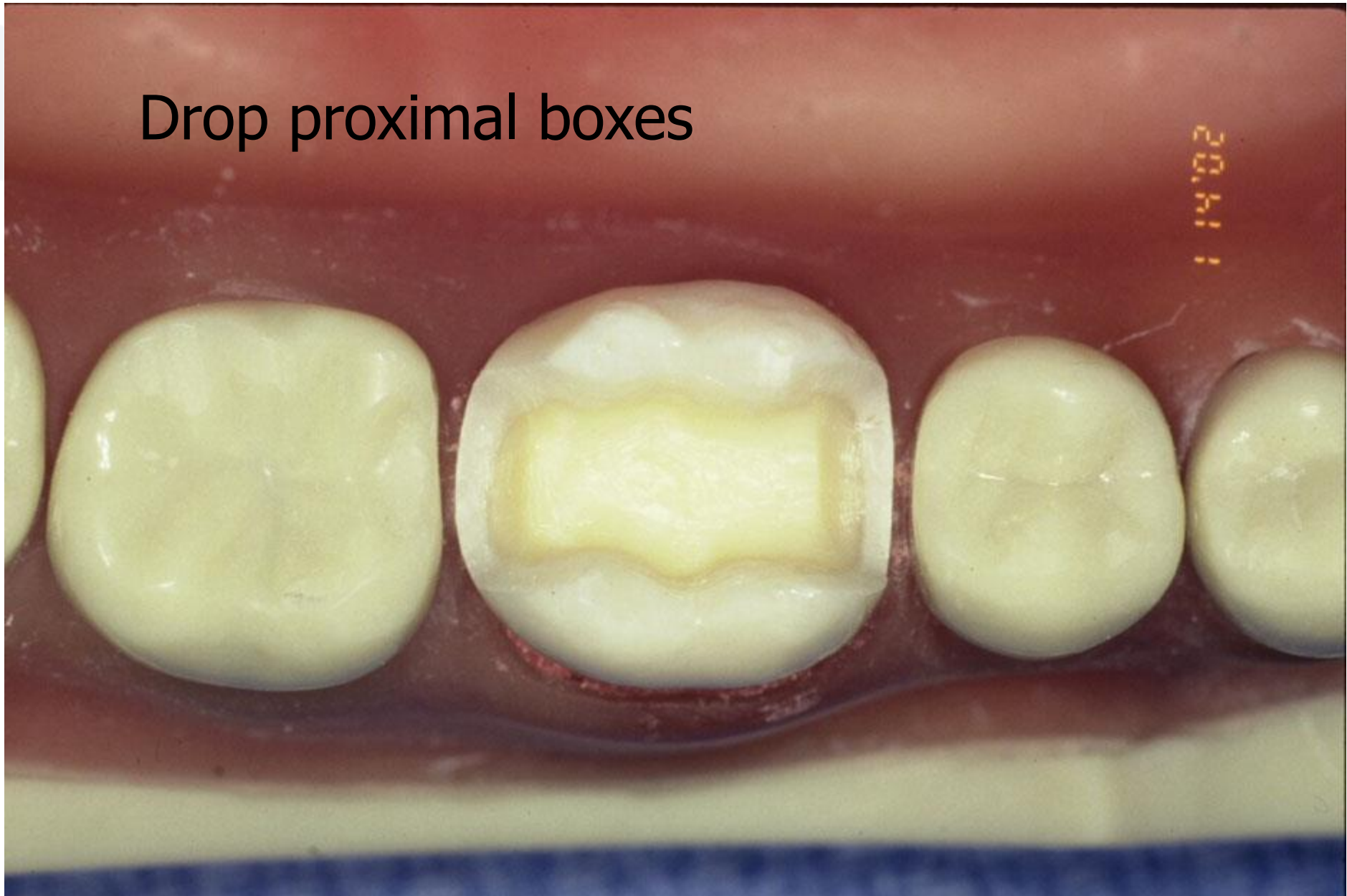


Evaluate taper and draw

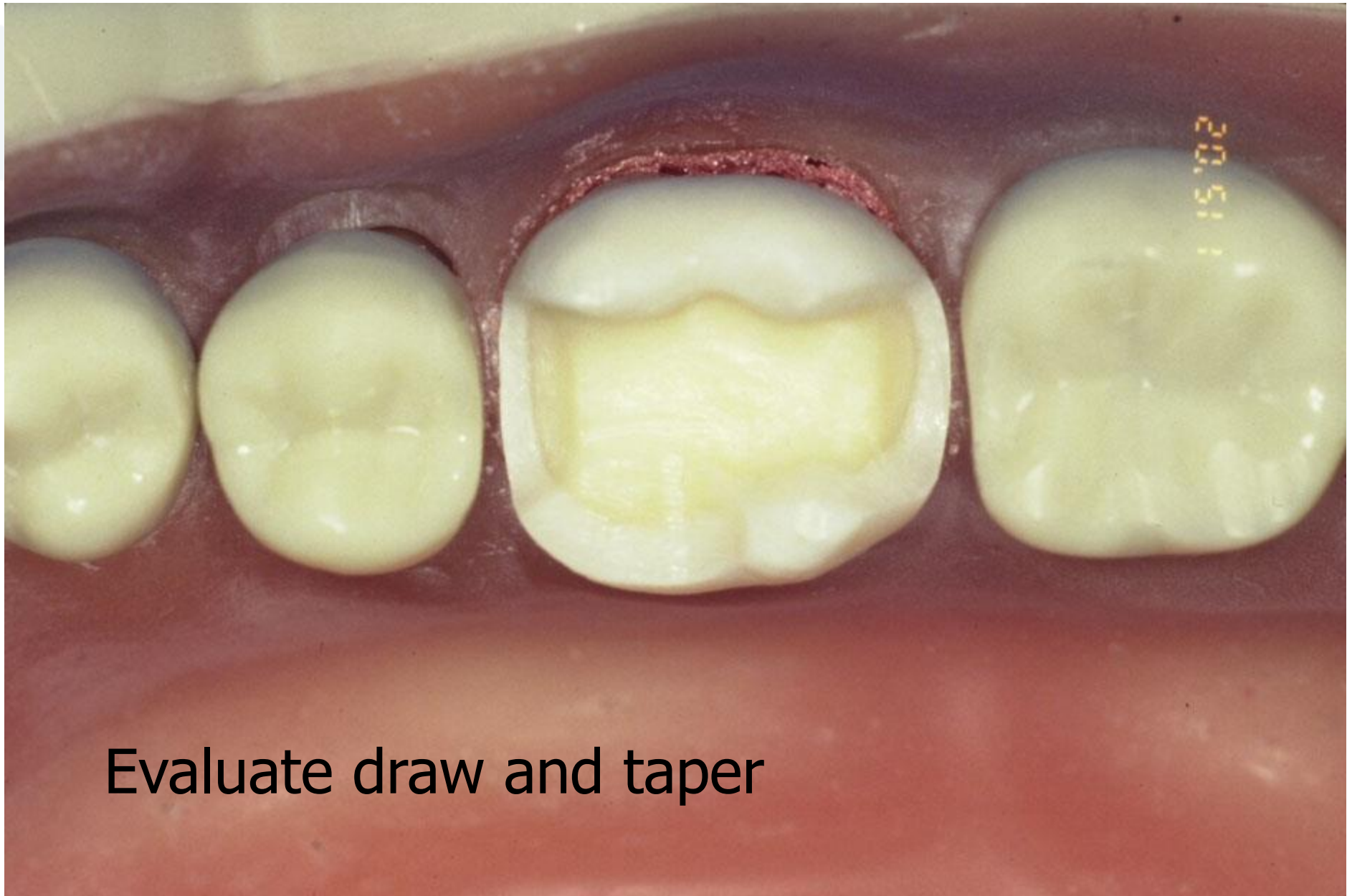


Establish proximal extensions

Drop proximal boxes







Evaluate draw and taper



Occlusal clearance



The background features several overlapping, semi-transparent geometric shapes. A prominent grey shape is a large triangle pointing downwards, with its base at the top left. To its right, there are several light blue shapes, including a large triangle pointing upwards and several other angular forms, creating a layered, architectural feel.

Preparation Modifications

MO Inlay



MOBL Inlay/Onlay



MOBL Inlay/Onlay





MOL Inlay/Onlay

MODB Inlay/Onlay





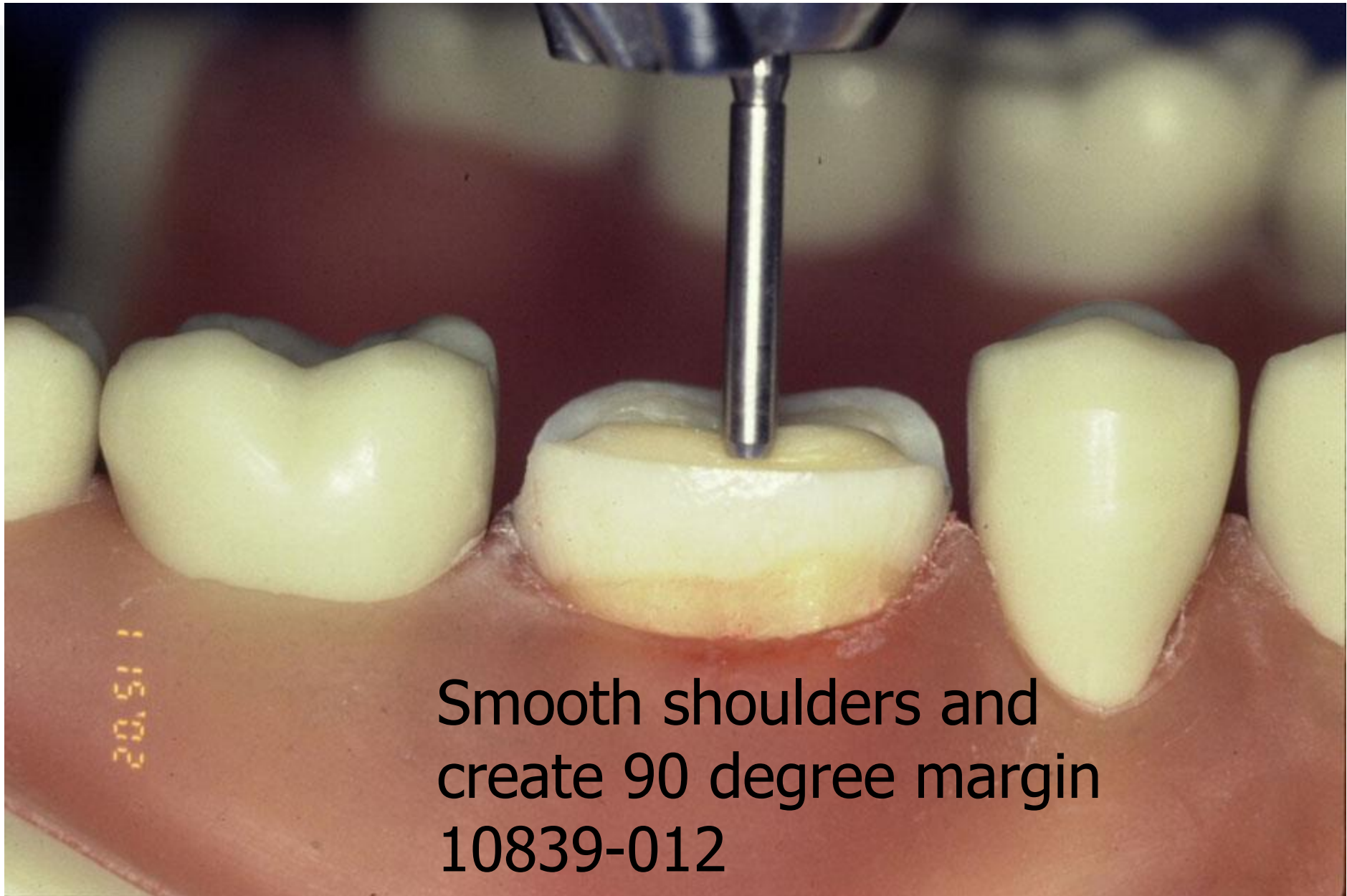
MOD Onlay

MOD Onlay

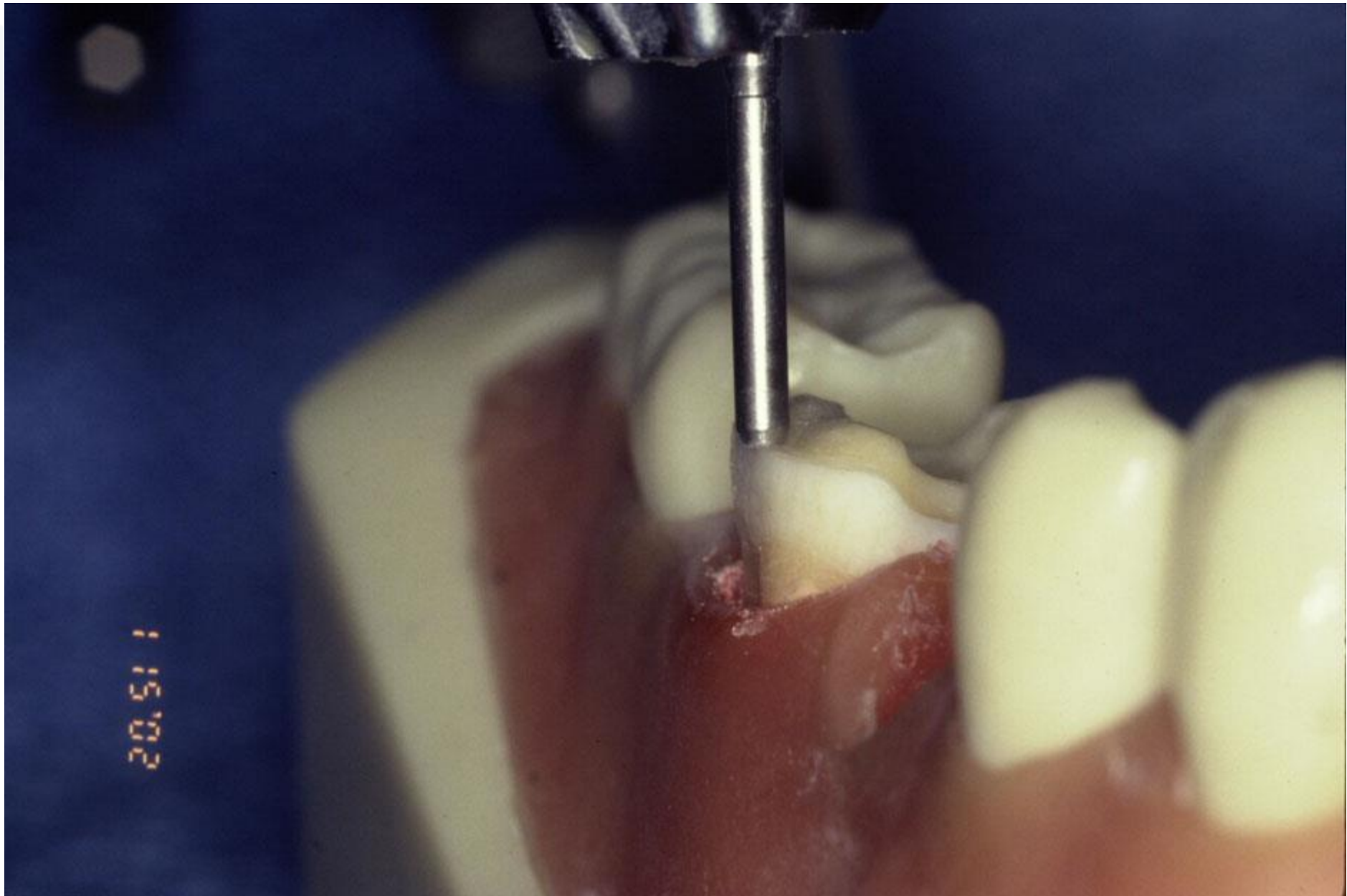




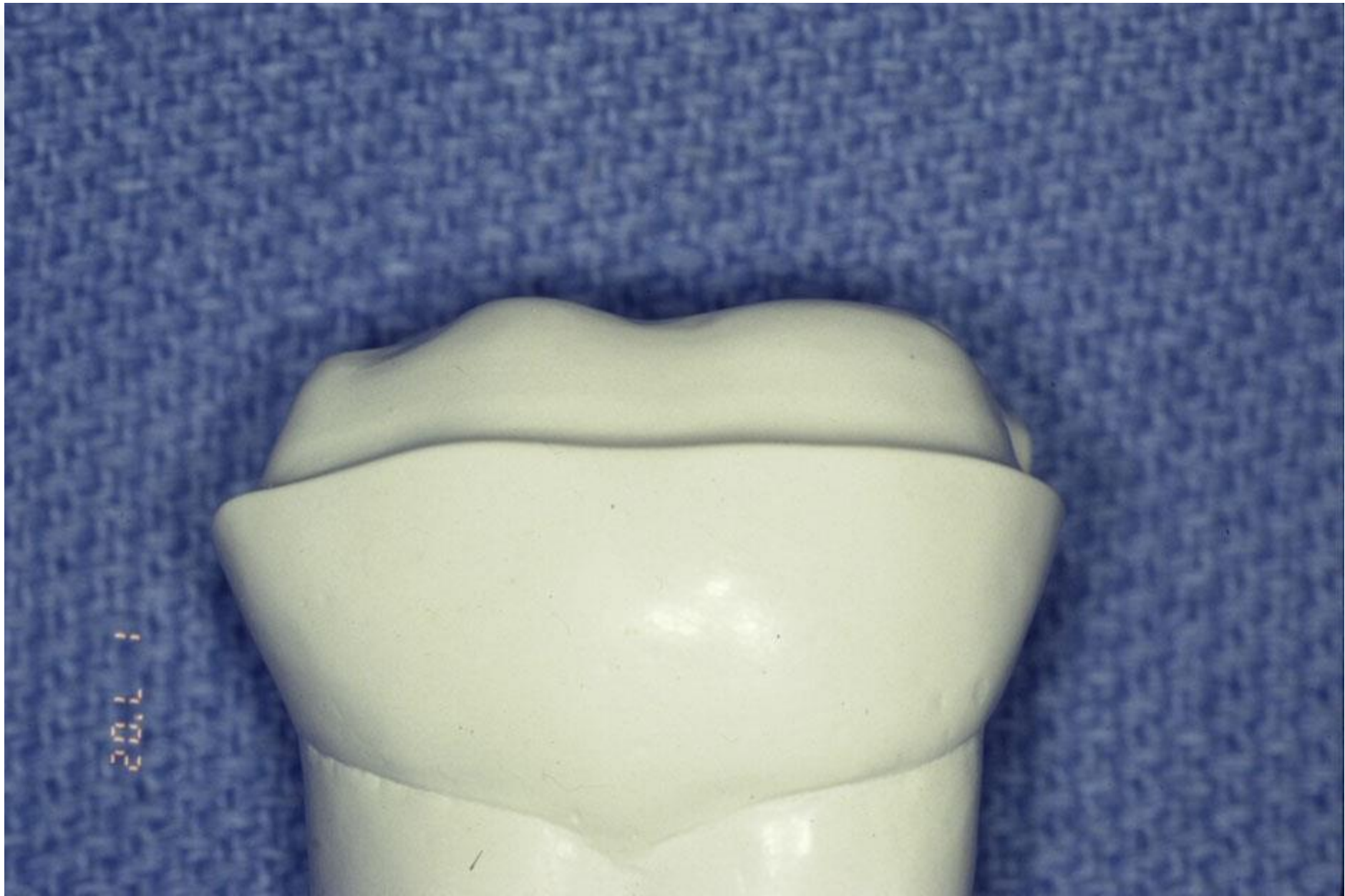




Smooth shoulders and
create 90 degree margin
10839-012





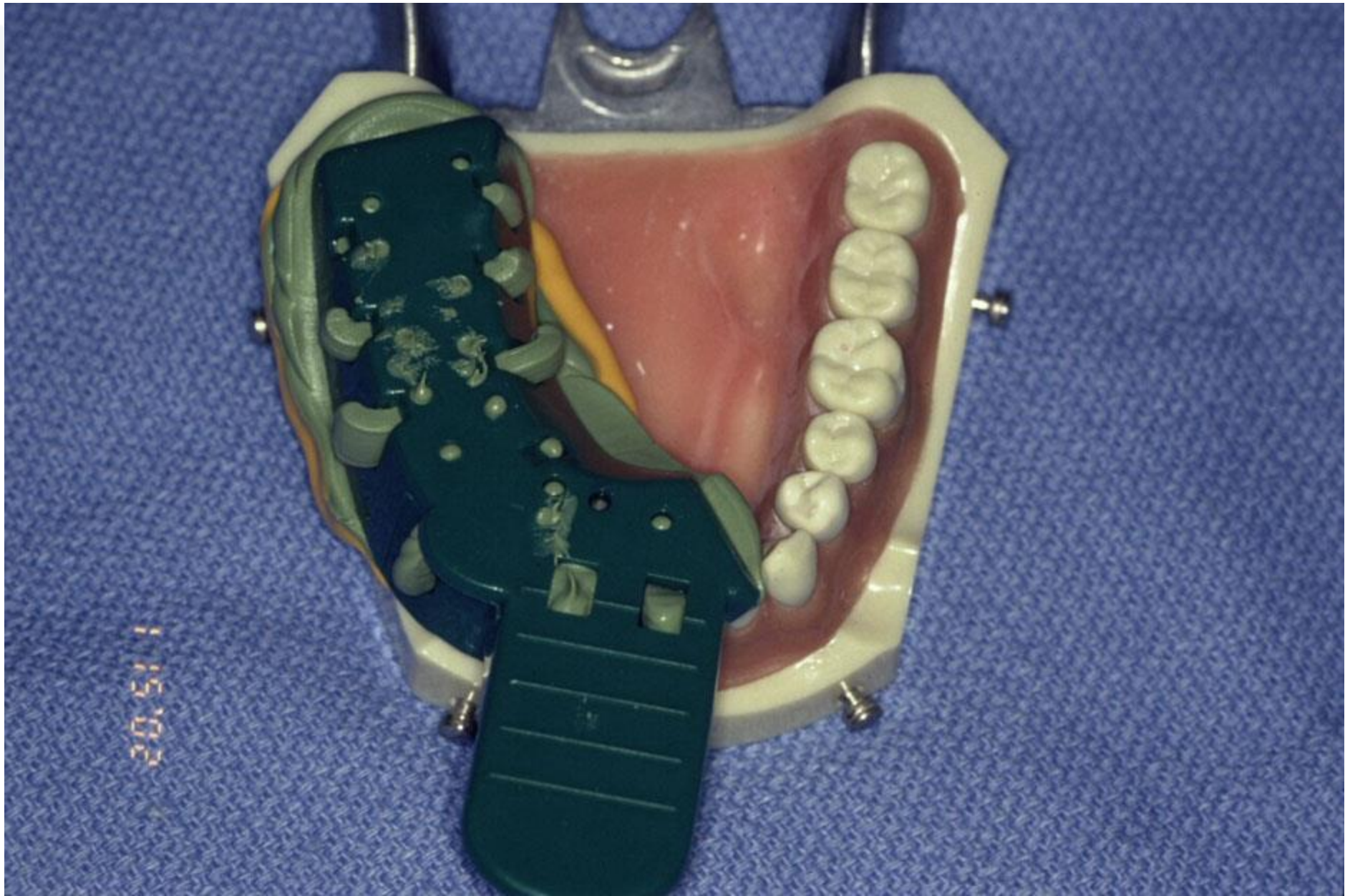






Impression

- Clinical
 - 1 or 2 units-double bite or full arch
 - 3 or more units-full arch
- Lab Project
 - Quadrant





Stent on quadrant
impression of prep



Fabricate Restoration

- Mix composite
- Place composite in stent
- Place stent with composite on die
- Cure composite
- Remove stent and restoration
- Add composite to fill voids
- Trim excess with acrylic bur





