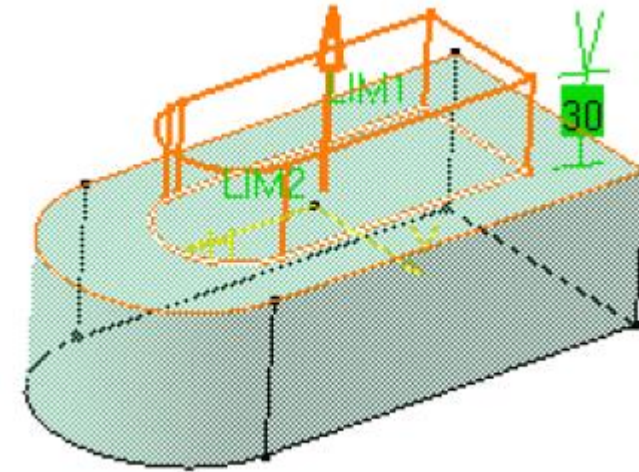
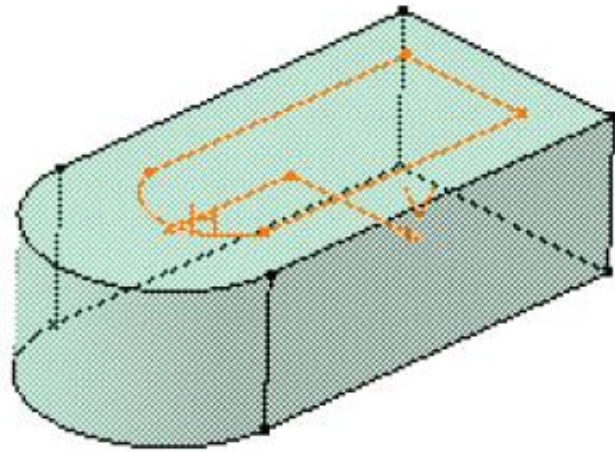


المحاضرة السابعة

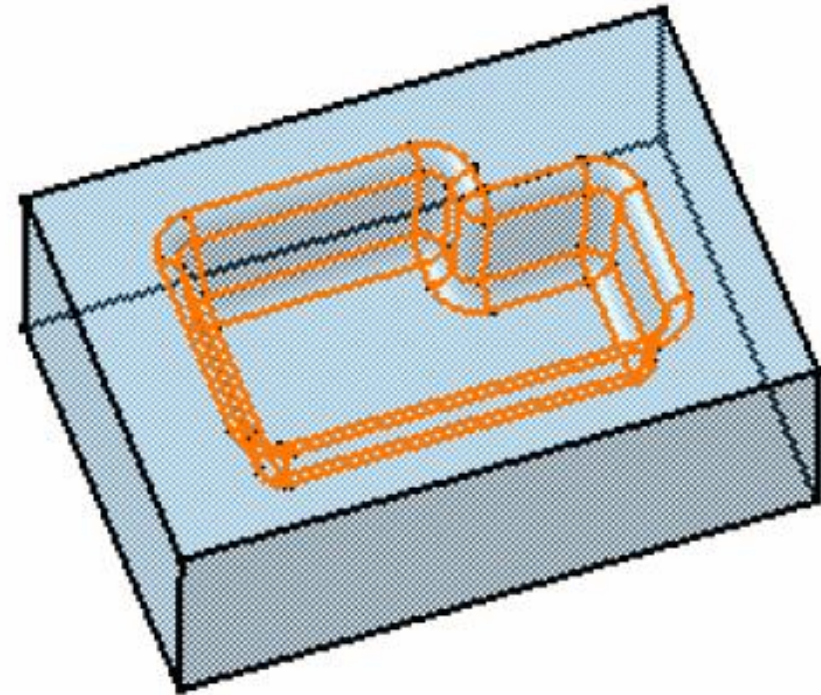
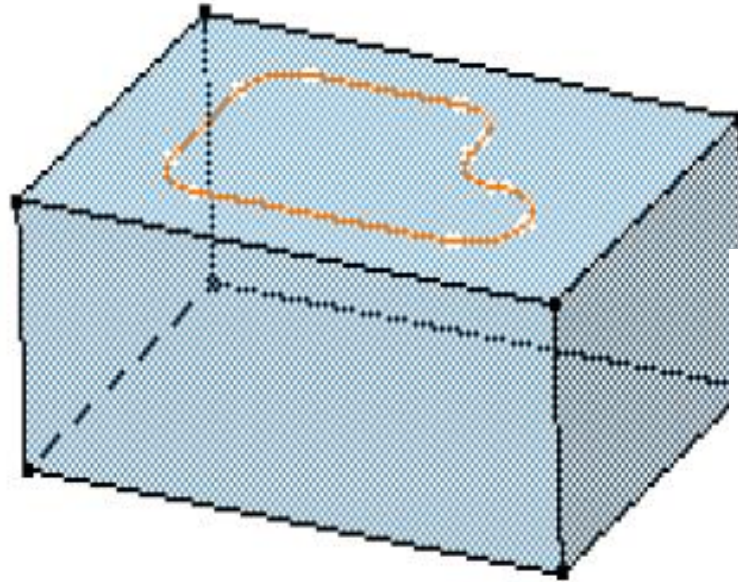
التصميم و التصنيع بمساعدة الحاسب



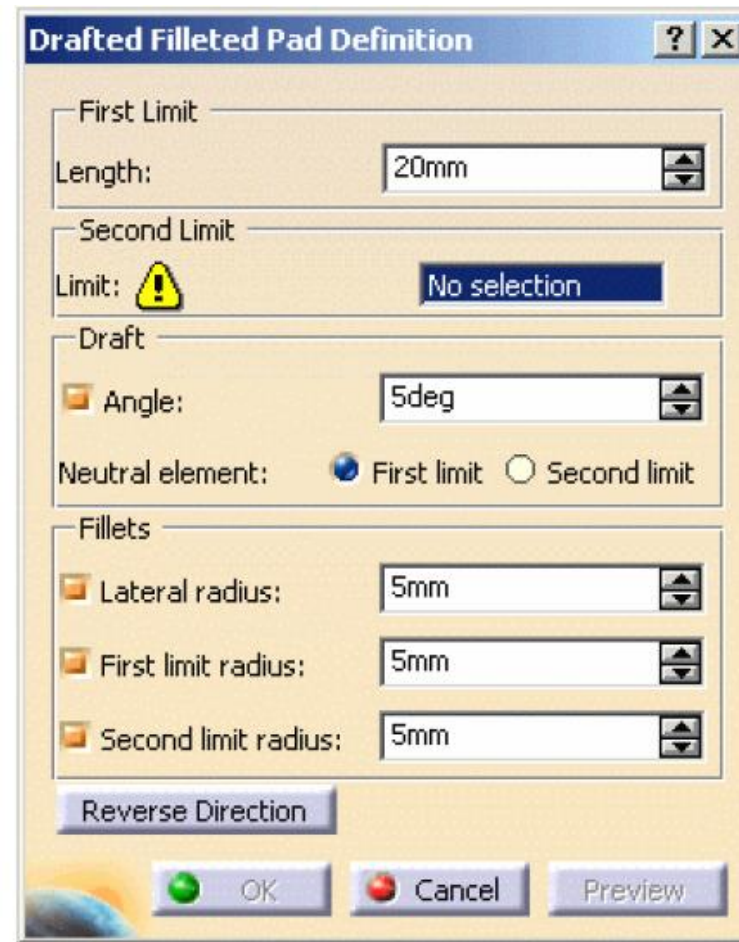
Pad تعلية اعطاء السماكة

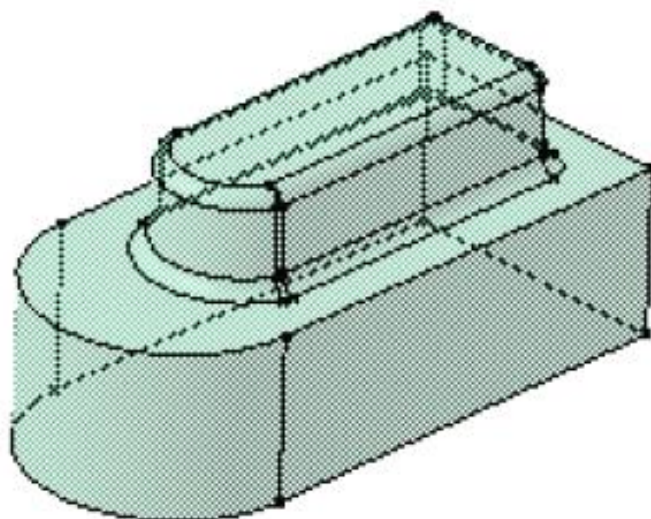
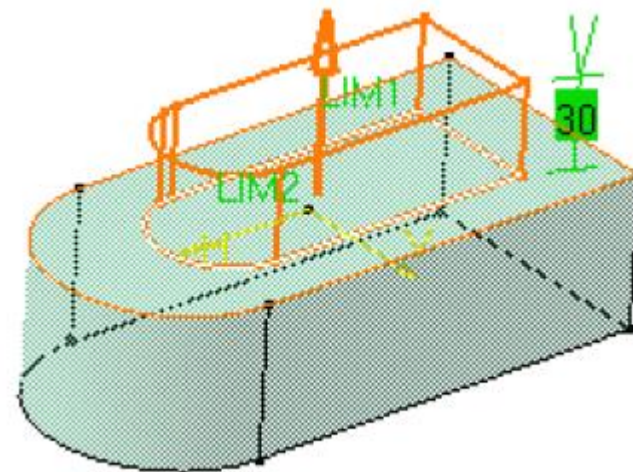
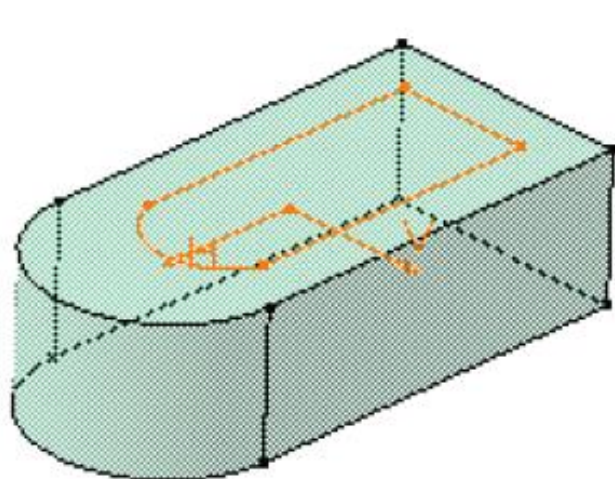


Pocket تعليمة تفريغ أو التحويف

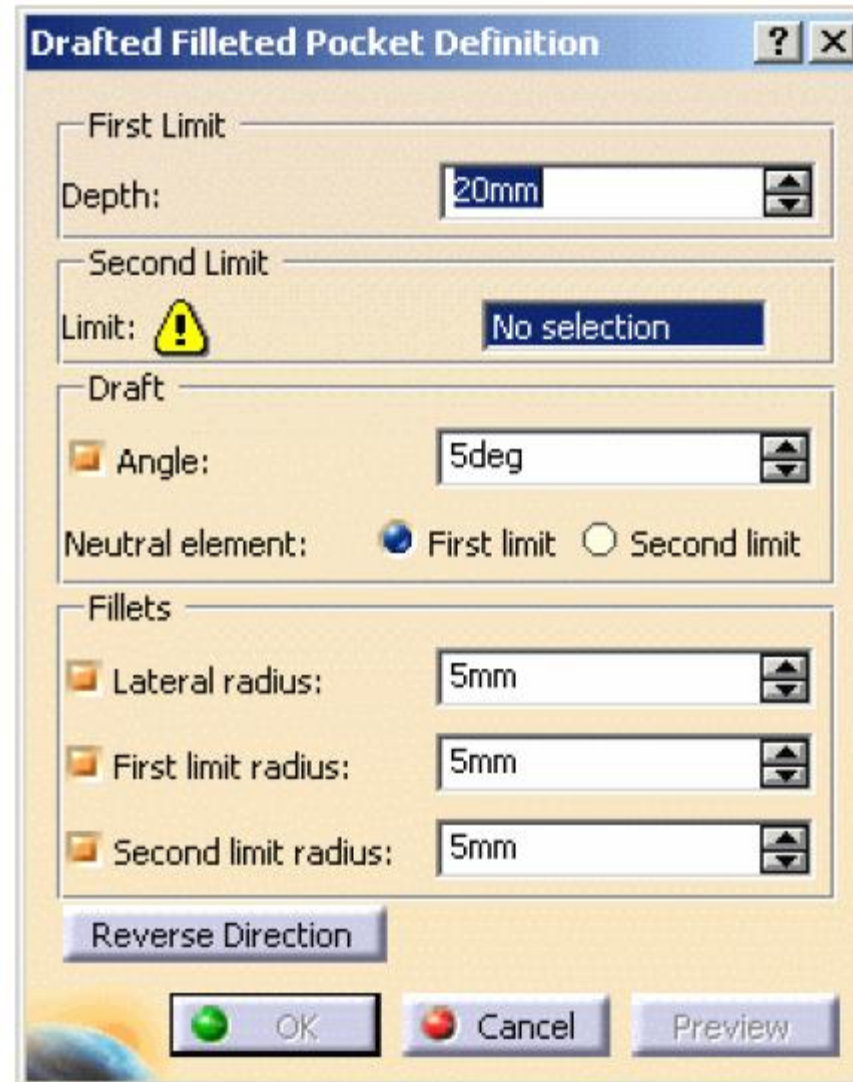


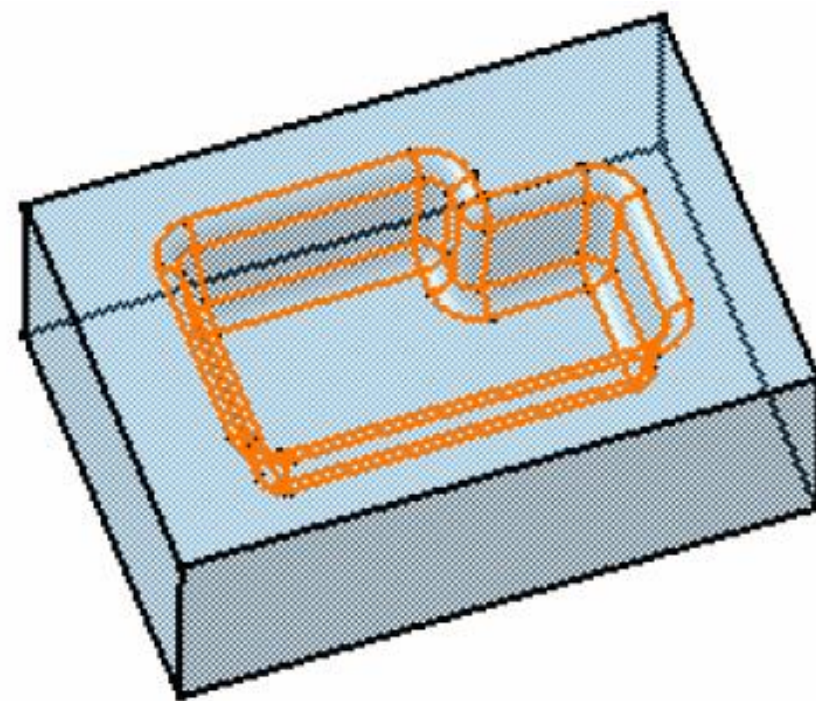
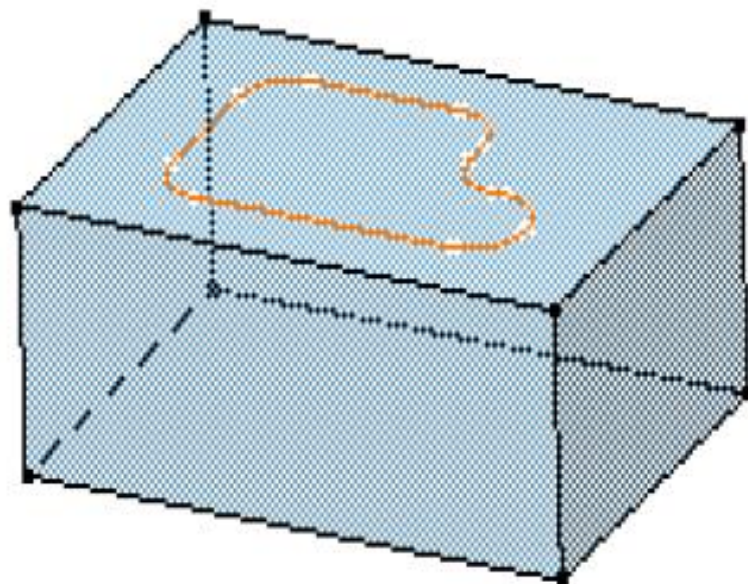
Creating Drafted Filleted Pads



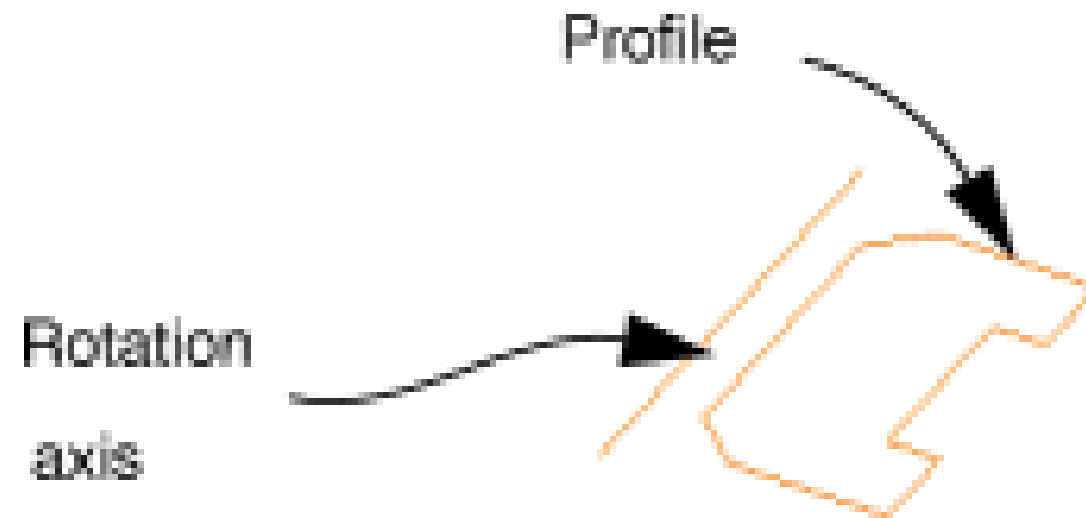


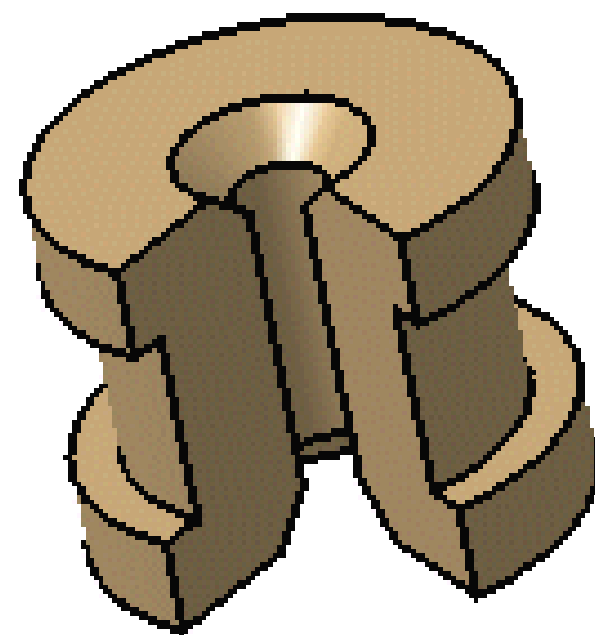
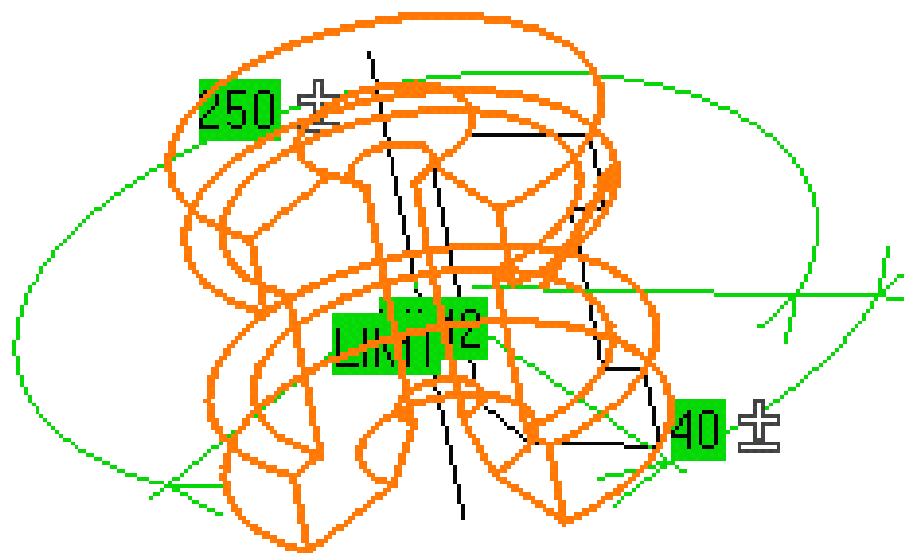
Creating Drafted Filleted Pockets



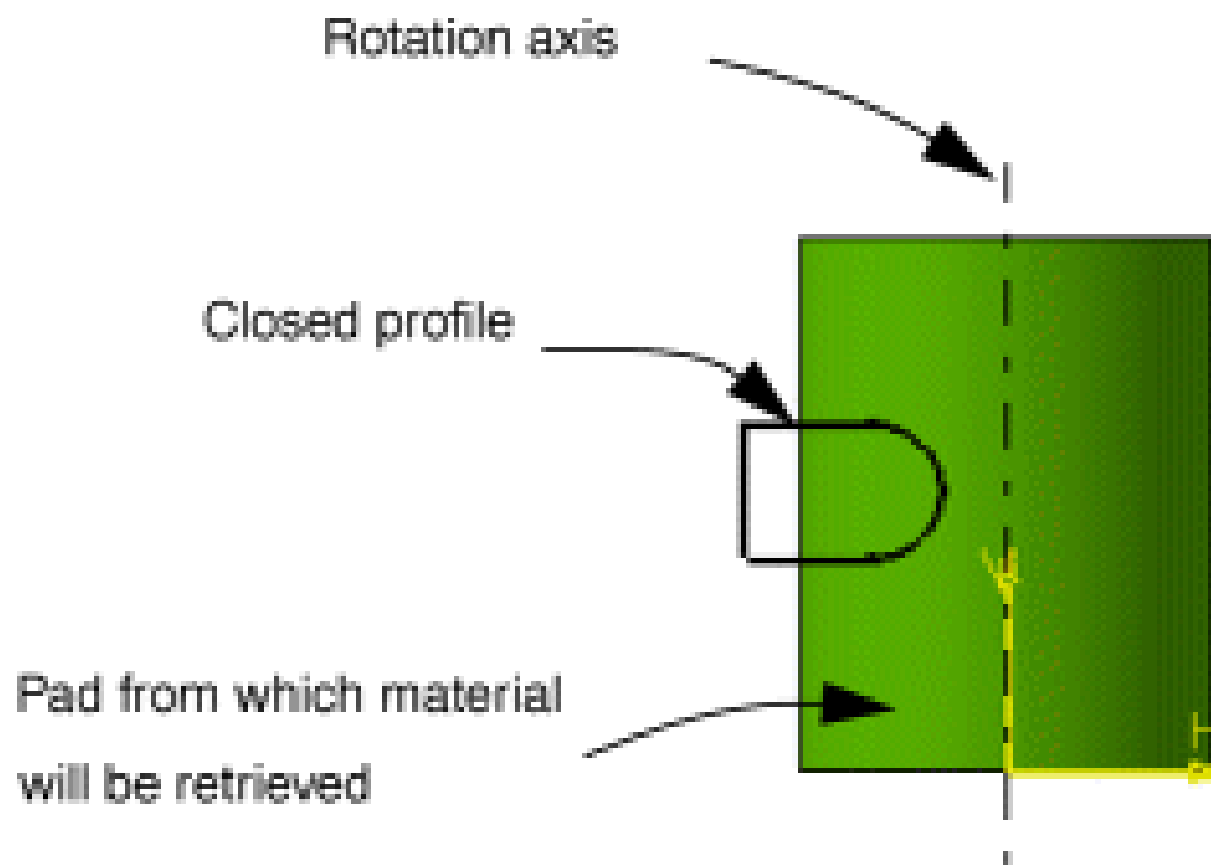


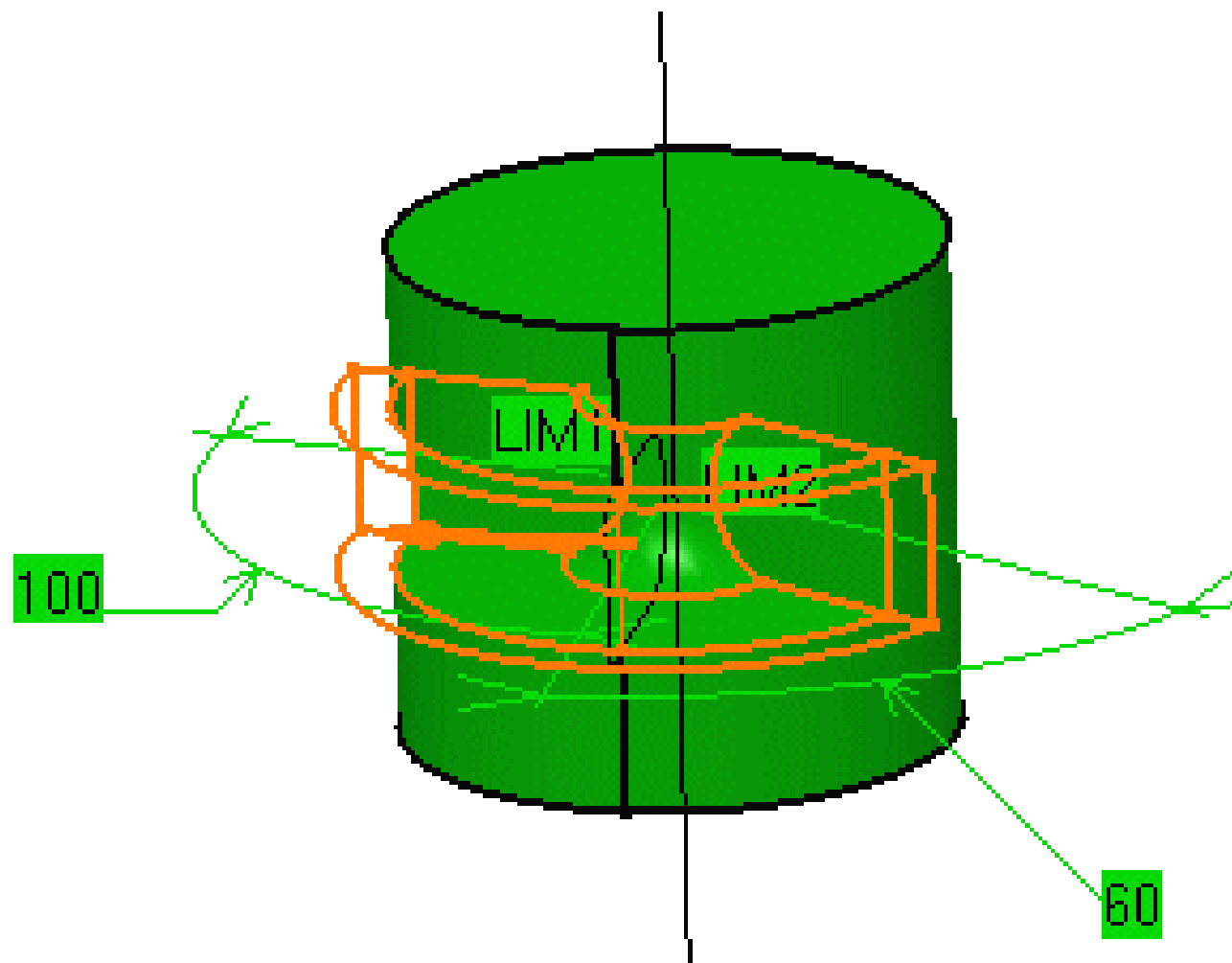
Shaft



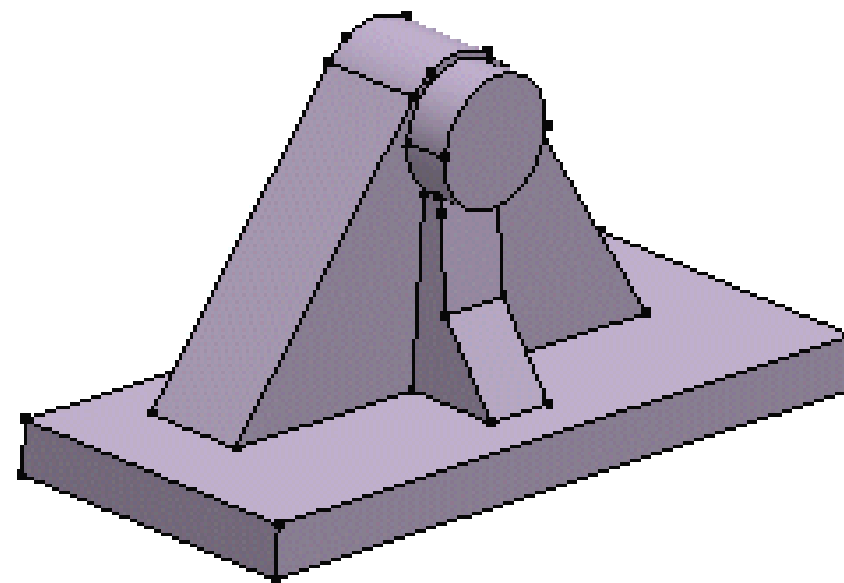
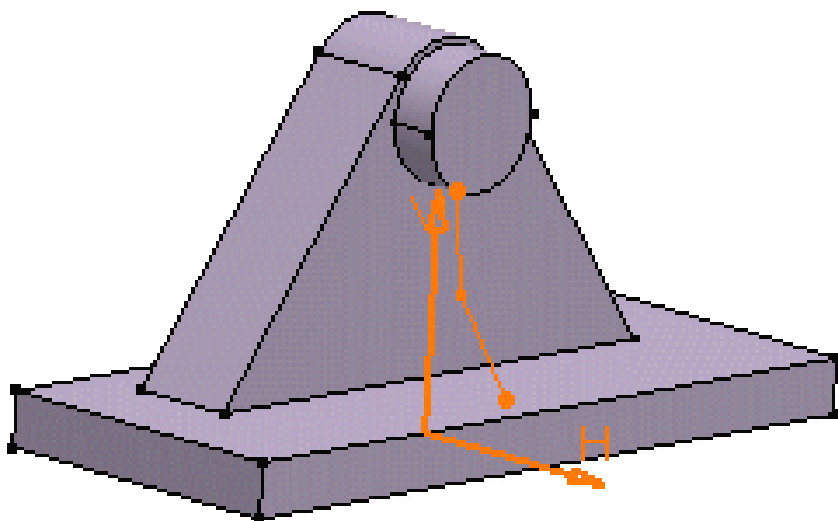


Groove

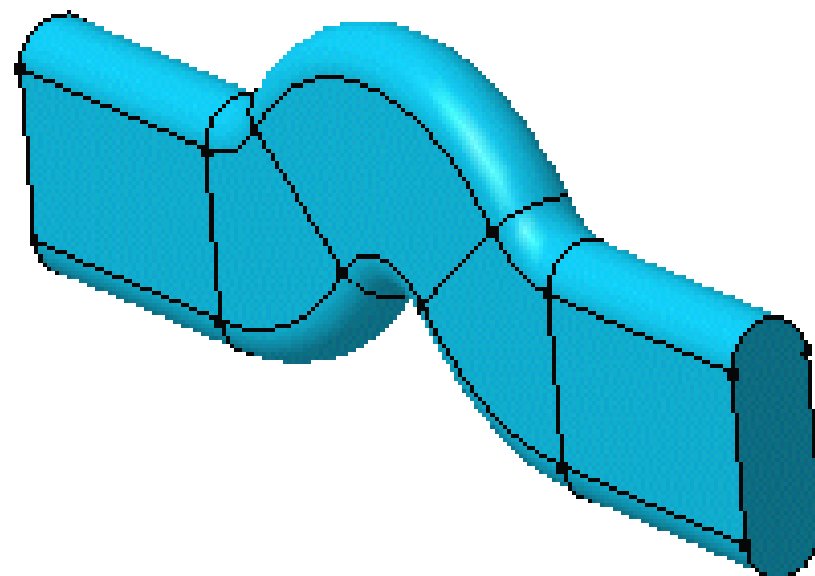
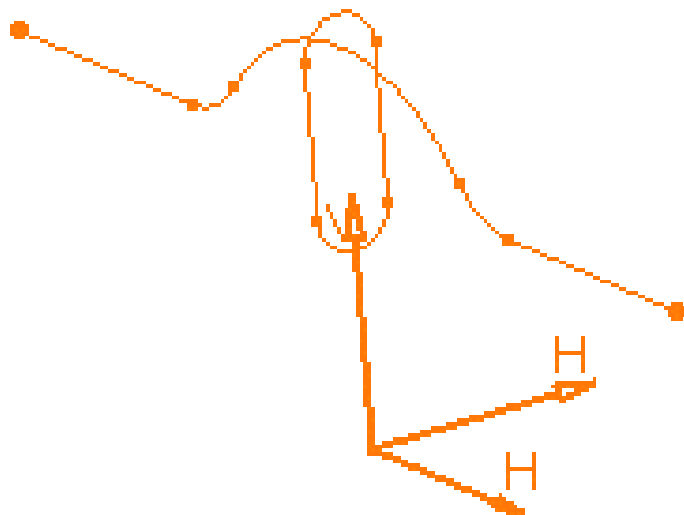




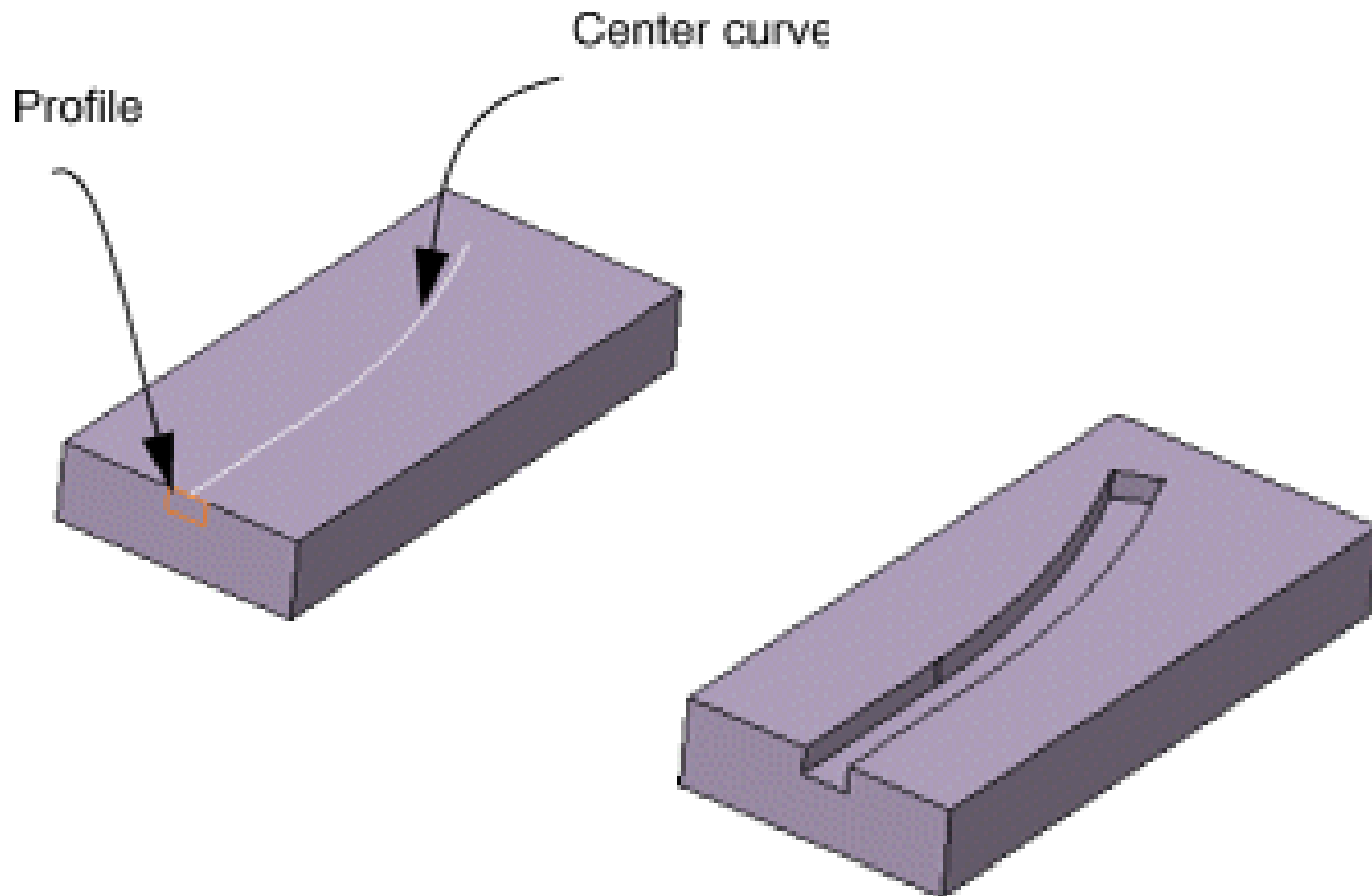
Stiffener



Rib



Slot



Creating Hole Features

رسم وتصميم الثقوب

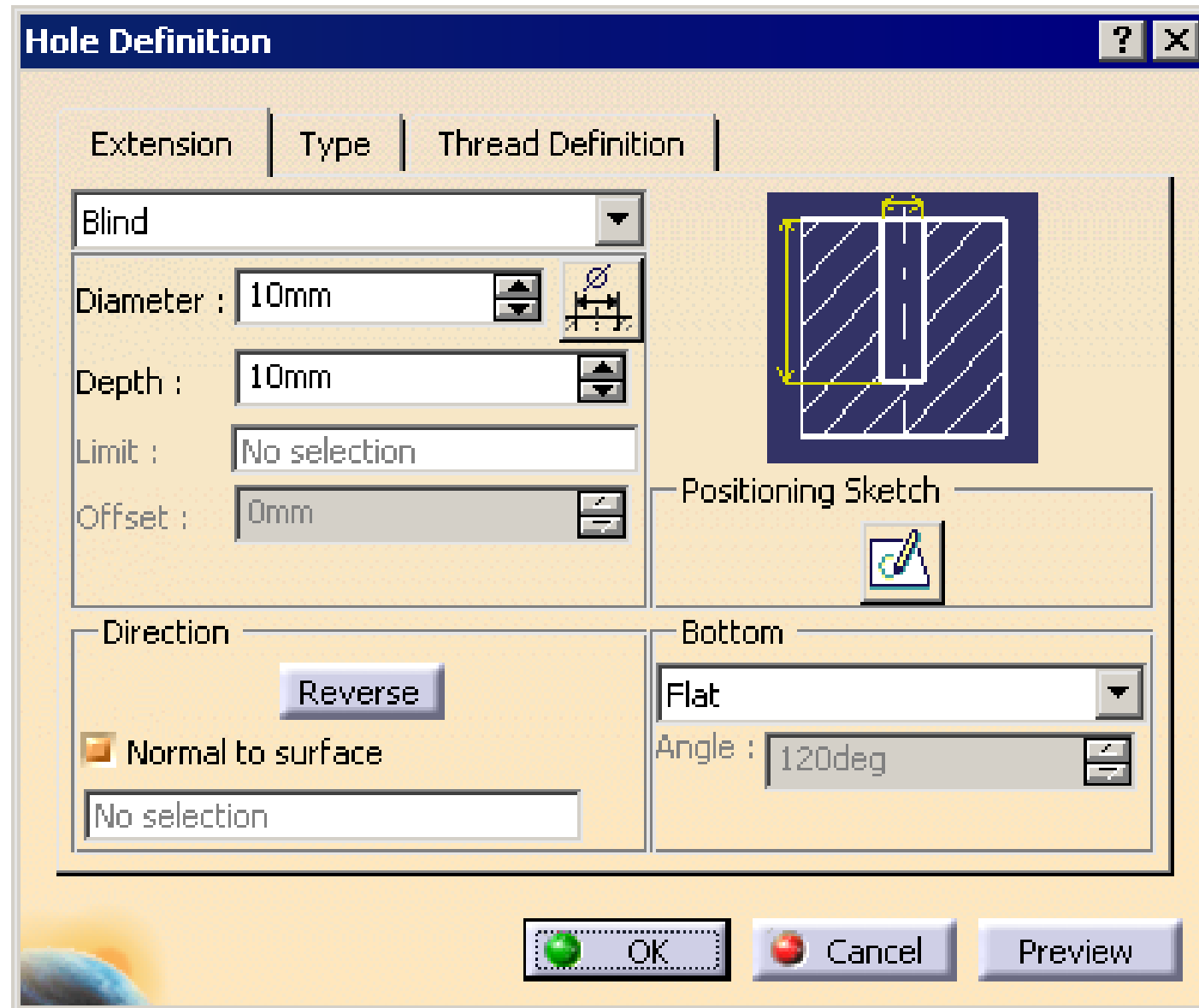
لرسم وتصميم الثقوب يجب استخدام التعليمات التالية :

Menu: Insert > Sketch-Based Features > Hole

Toolbar: Sketch-Based Features > Hole

انواع الثقوب

You can create a simple hole, a tapered hole, a counterbored hole, a countersunk hole, and a counterdrilled hole using the Hole tool. You can also provide threads in the holes. The **Hole Definition** dialog box is shown in Figure

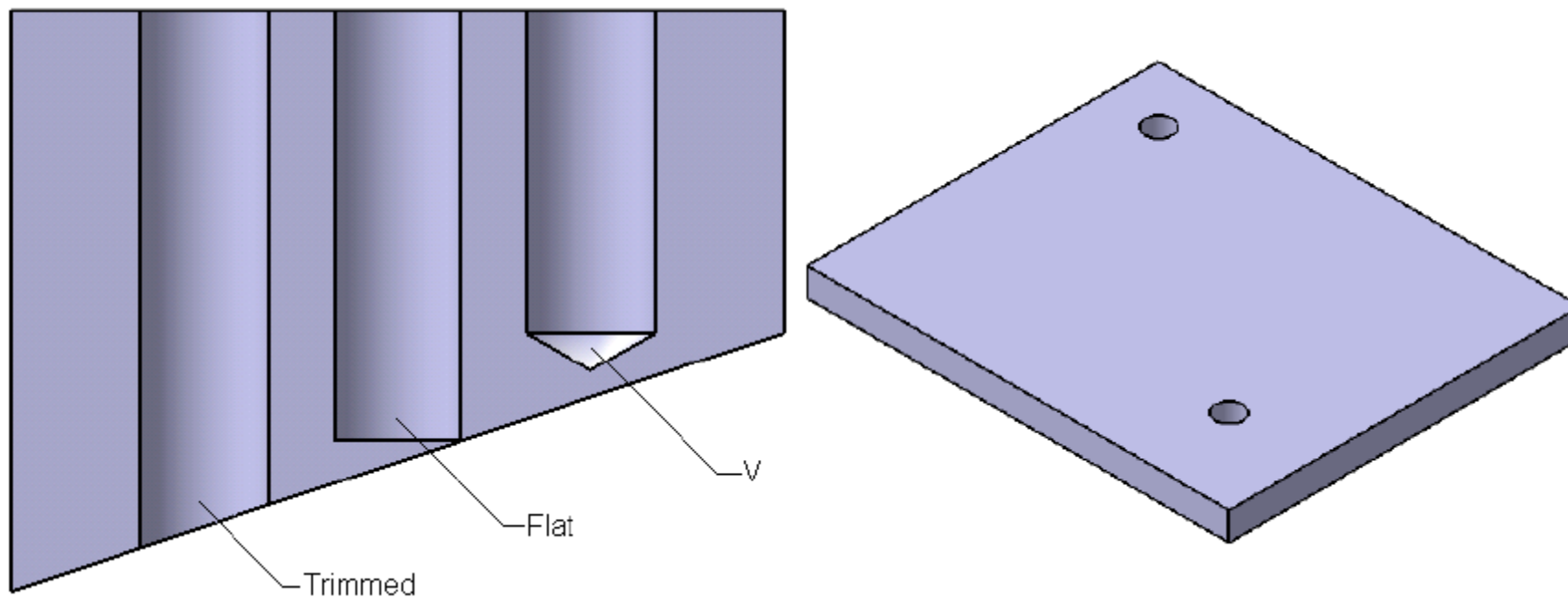


Creating a Simple Hole

Invoke the **Type** tab; the **Simple** option is selected in its drop-down list.

Therefore, a simple hole will be created using the current option.

Now, invoke the **Extension** tab



Creating a Threaded Simple Hole

To create the threaded hole, invoke the **Thread Definition** tab from the **Hole**

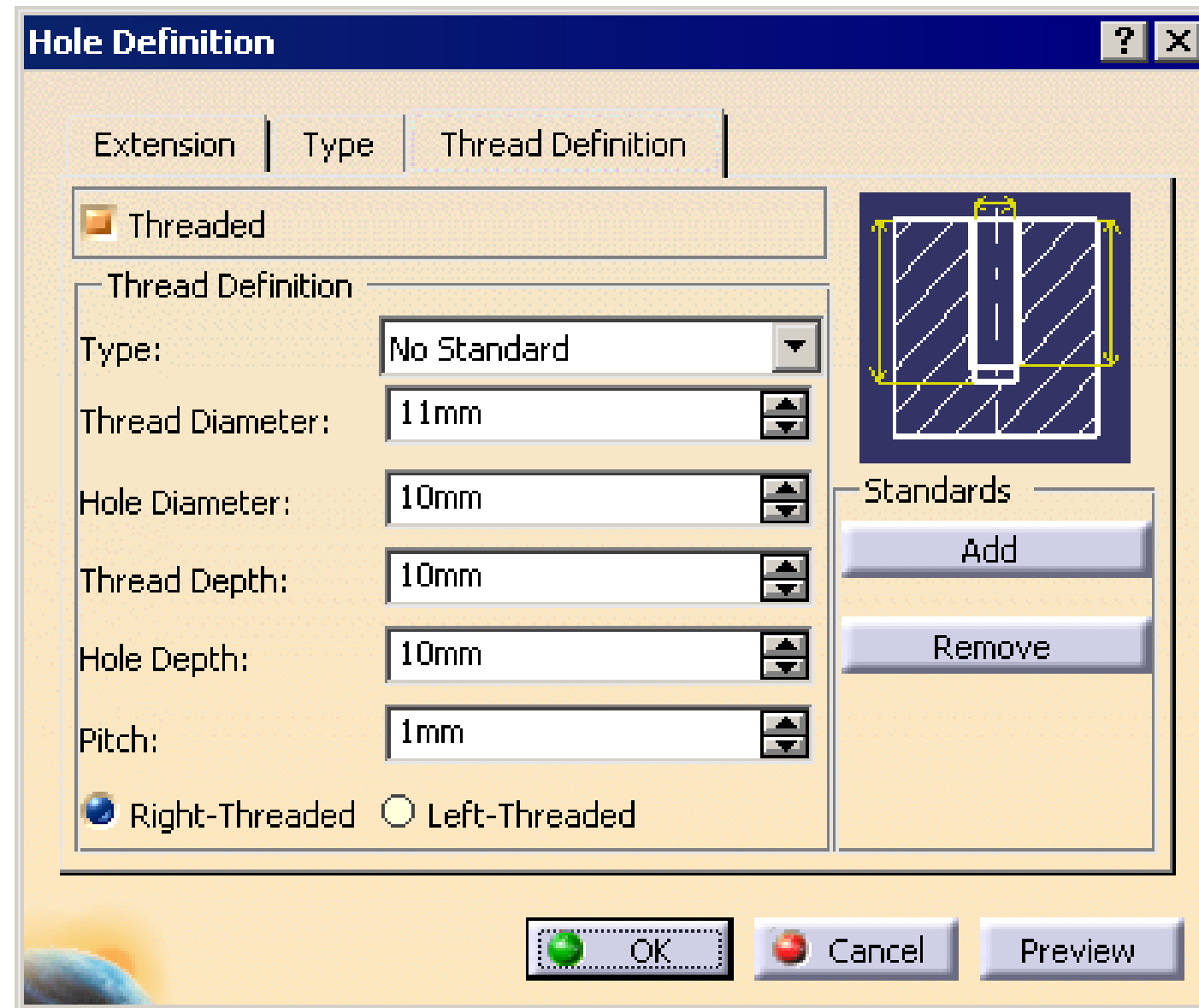
Definition

dialog box. By default, the **Threaded** radio button is cleared. Select the

Threaded radio

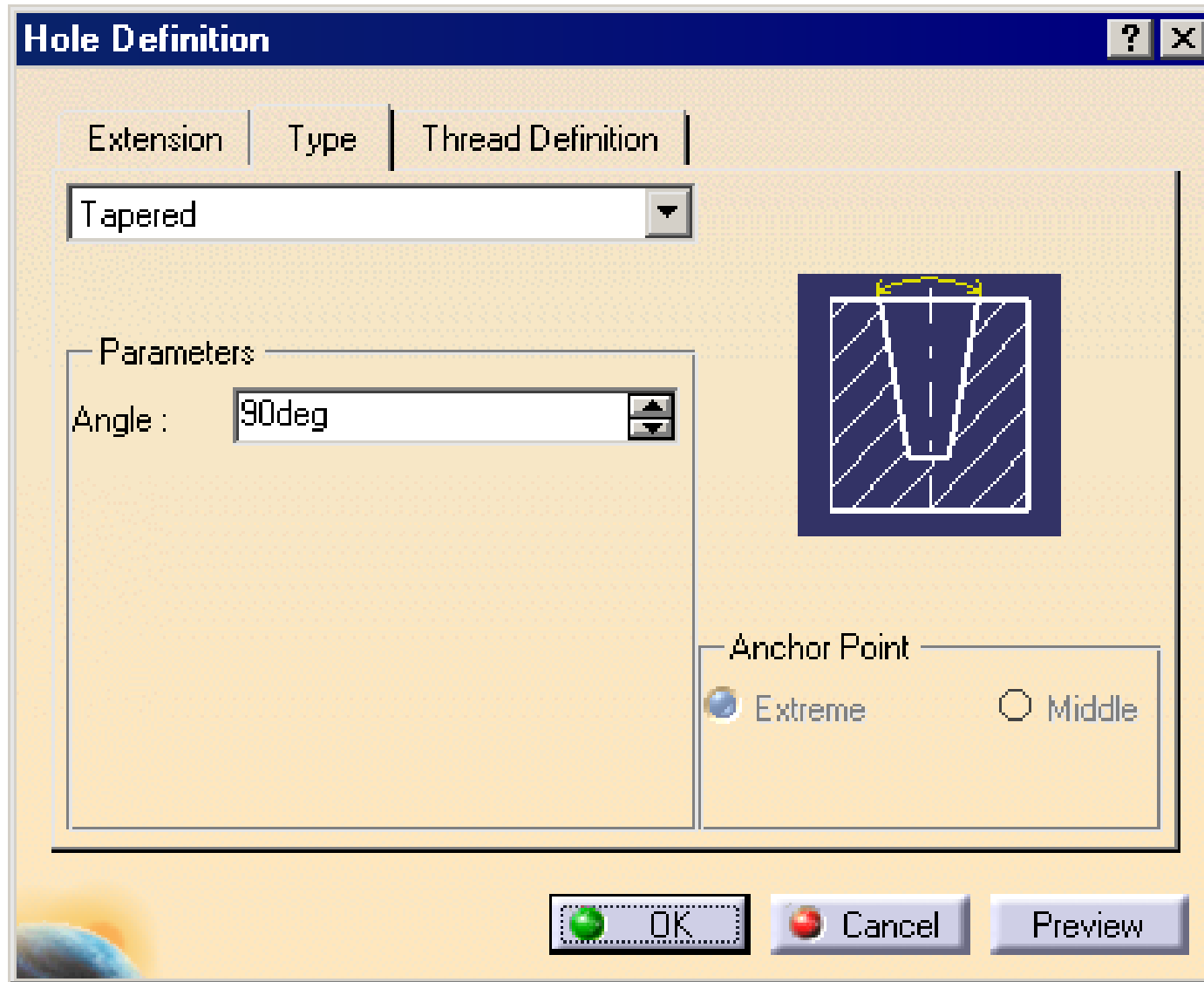
button to invoke the options available in the **Thread Definition** tab, as shown

in Figure



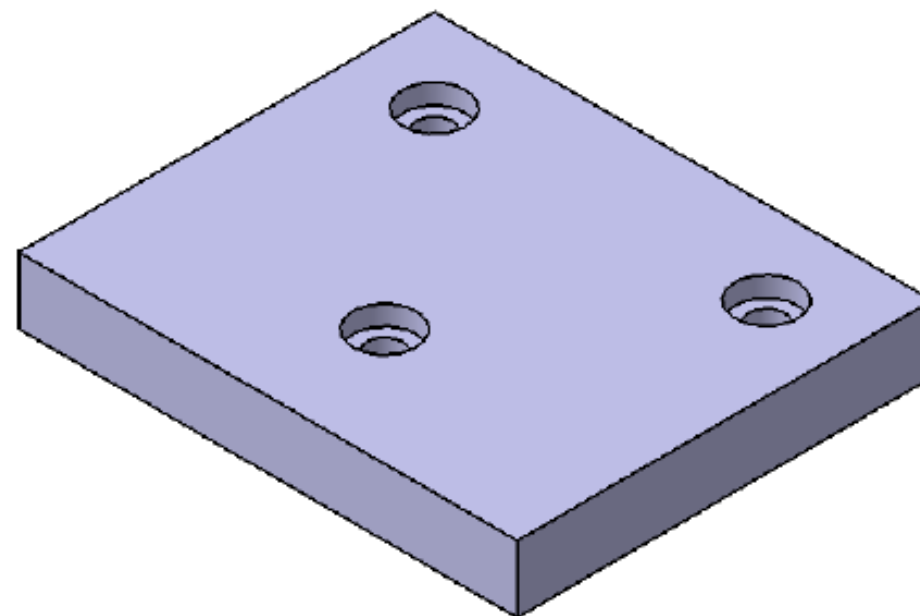
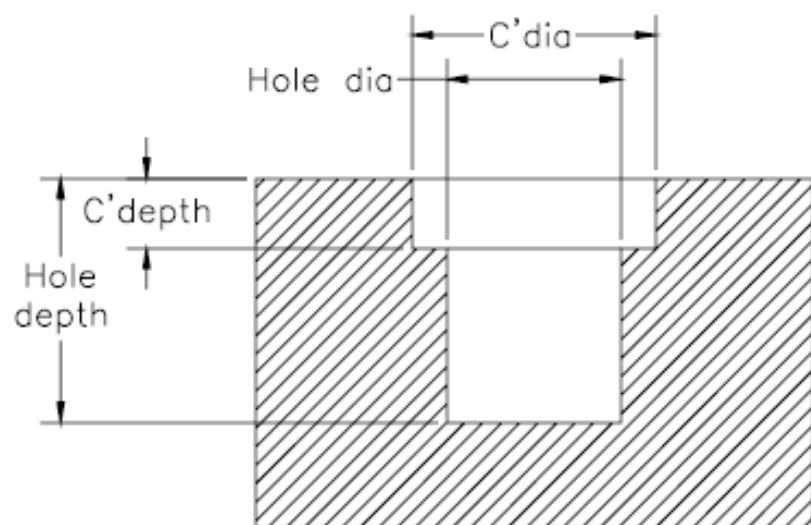
Creating a Tapered Hole

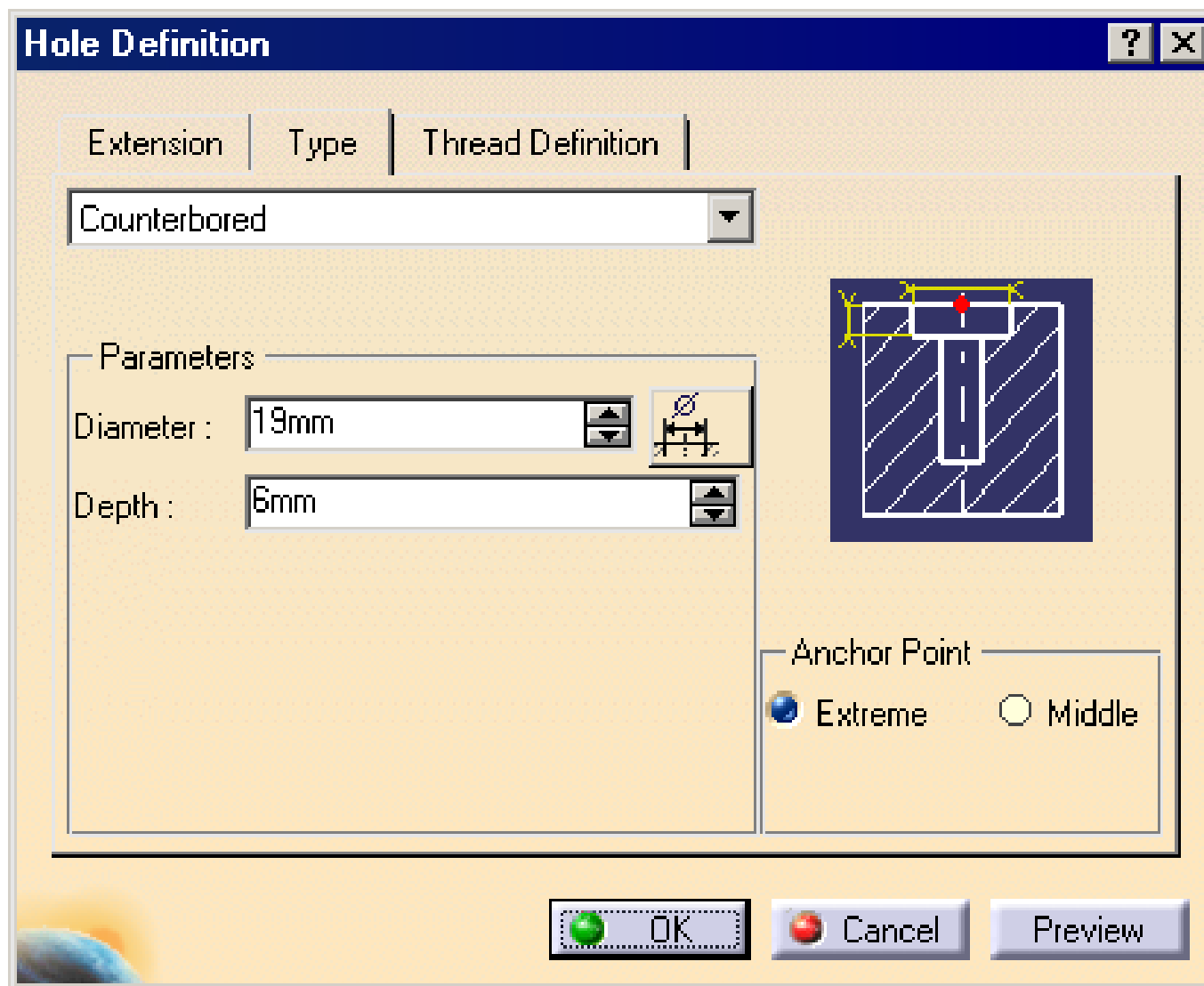
To create a tapered hole, invoke the **Type** tab of the **Hole Definition** dialog box and select the **Tapered** option from the drop-down list. Specify the taper angle in the **Angle** spinner available in the **Parameters** area,



Creating a Counterbored Hole

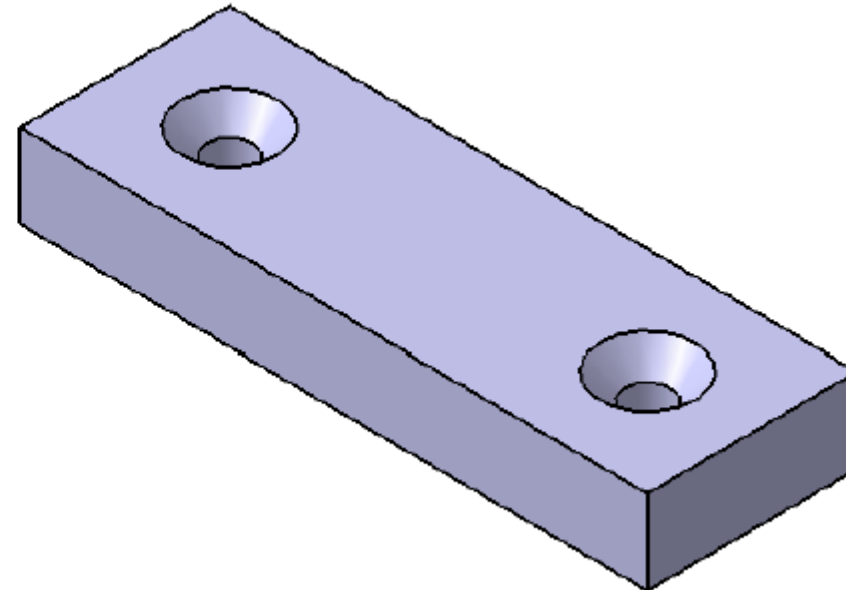
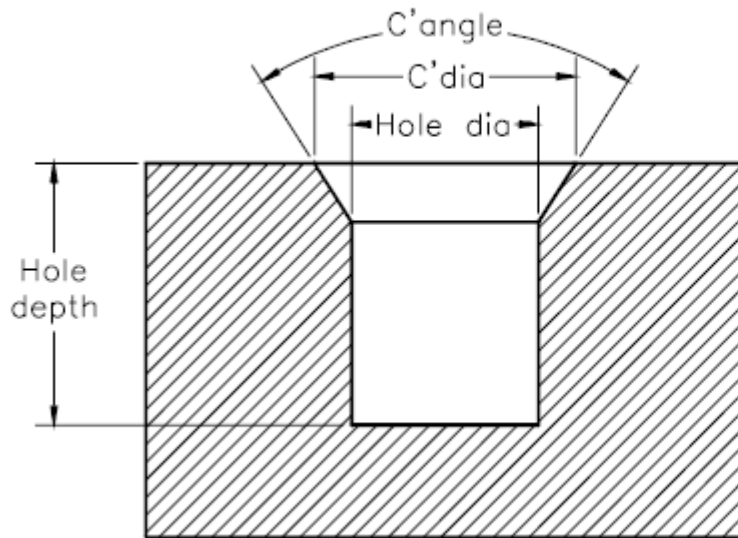
To create a counterbored hole, select the **Counterbored** option from the drop-down list available in the **Type** tab of the **Hole Definition** dialog box. A preview of counterbored hole is displayed in the geometry area. You can set the value of the counter diameter by using the **Diameter** spinner available in the **Parameters** area.

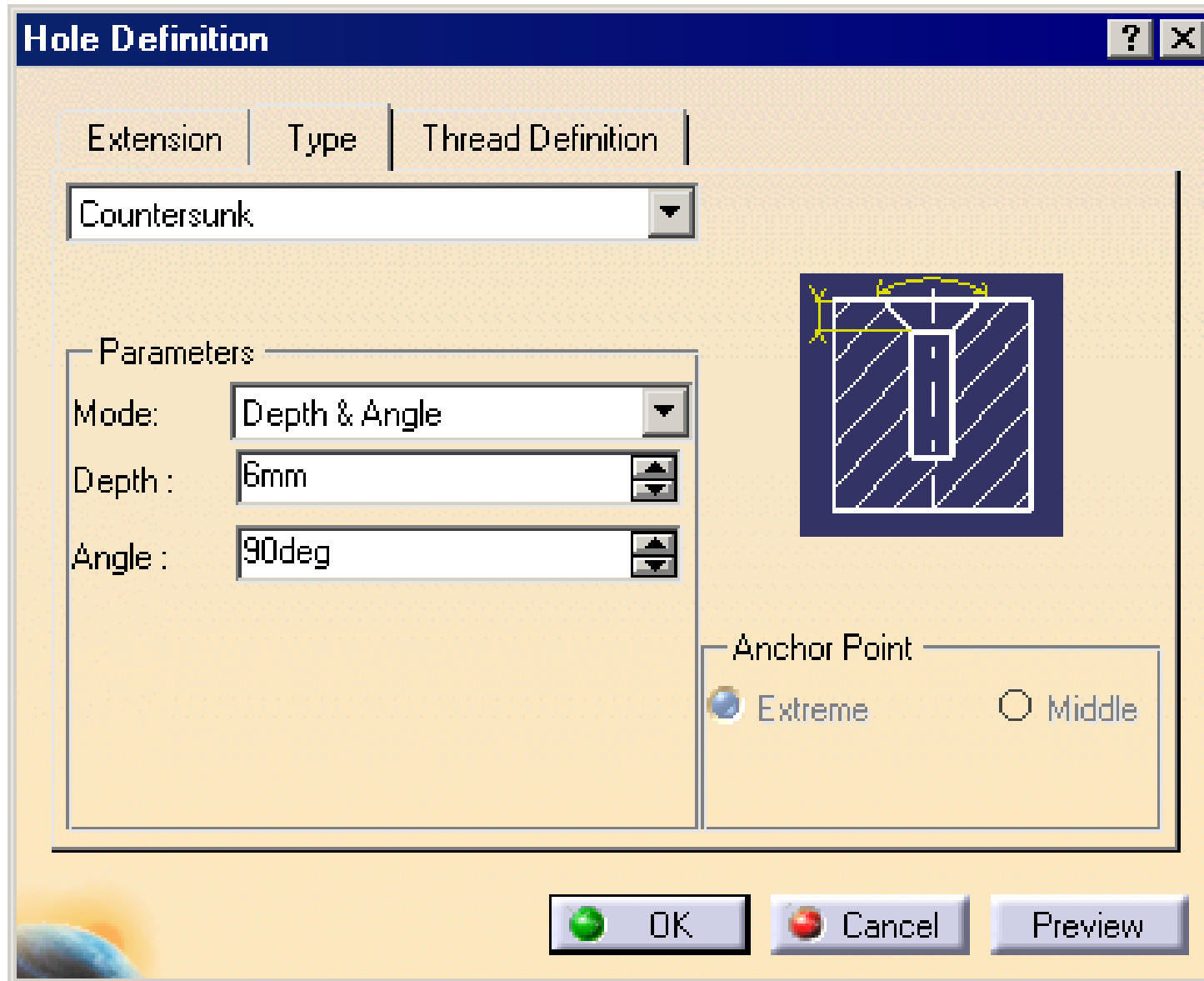




Creating a Countersunk Hole

To create a countersunk hole, select the **Countersunk** option from the drop-down list available in the **Type** tab





Creating the Counterdrilled

