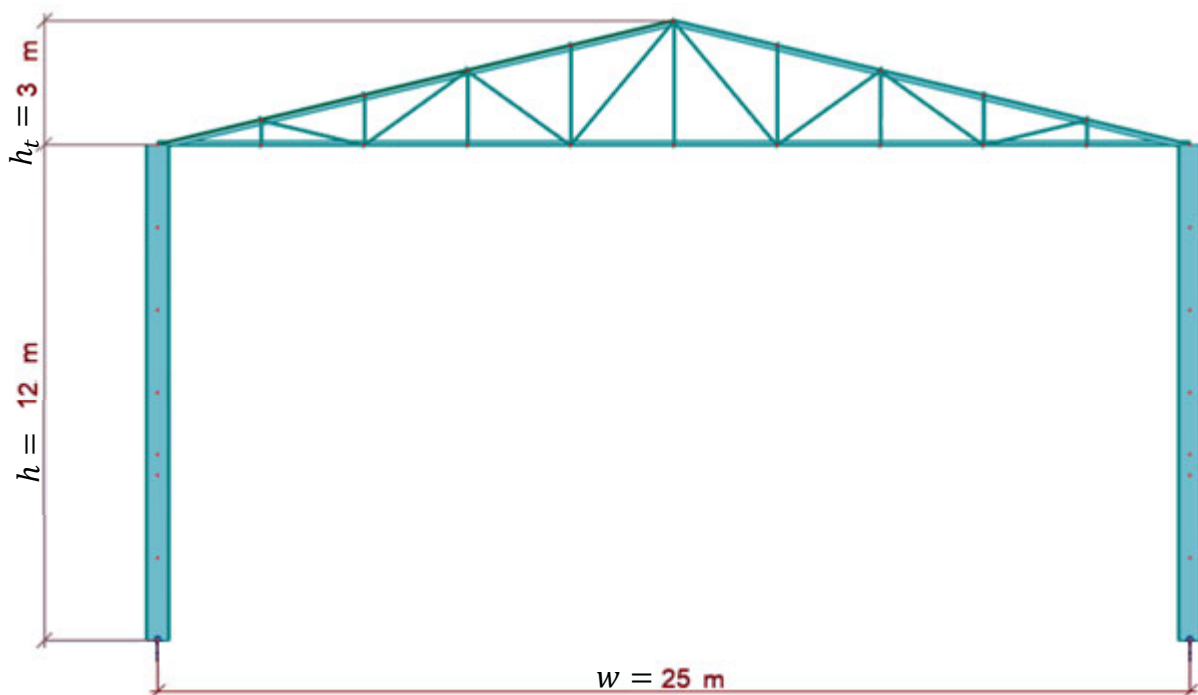


Manara University  
Faculty of Engineering, Department of Civil Engineering  
Course: Analysis & Design of Temporary Structures

## Design of Steel Temporary Building

Design the steel building shown in the figure using Autodesk Robot Structural Analysis Professional. The details are as follows:

- ✚ **Wind speed:**  $v = 18$  m/sec
- ✚ **Distance between trusses:**  $T = 5$  m
- ✚ **Cladding dead load:**  $DL = 0.15$  kN/m<sup>2</sup>, **Live load:**  $LL = 0.6$  kN/m<sup>2</sup>
- ✚ **Longitudinal dimension of the building:**  $l = 30$  m
- ✚ **Steel grade:** S275



*The Course Lecturer*

*Dr Bashar Salhab*